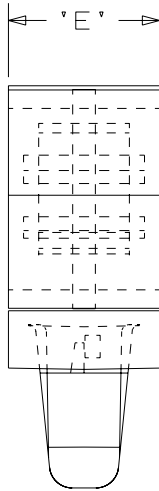
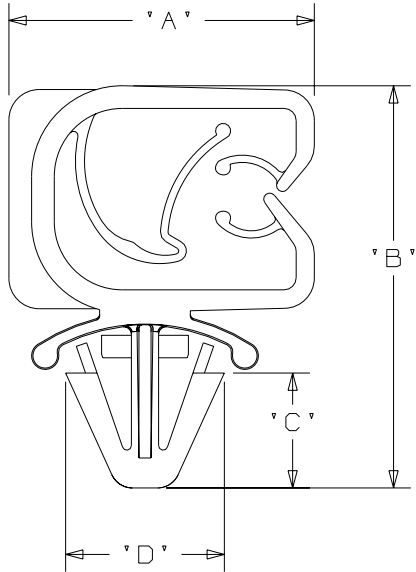
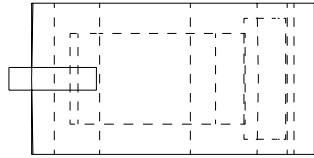


THIS COPY IS PROVIDED ON A RESTRICTED BASIS AND IS NOT TO BE USED IN ANY WAY DETRIMENTAL TO THE INTERESTS OF PANDUIT CORP.

PANDUIT PART NO.	DIMENSIONS					MATERIAL
	'A'	'B'	'C'	'D'	'E'	
HCMP06C12_20	20.45 19.94	27.94 27.43	8.12 7.62	10.65 10.15	10.29 9.78	A. SCHULMAN SCHULAMID 66 MV 2 (BLACK)
HCMP06C12_30	20.45 19.94	27.94 27.43	8.12 7.62	10.65 10.15	10.29 9.78	A. SCHULMAN SCHULAMID 66 MV 3 H (BLACK)



NOTES:

- VISUALLY INSPECT PARTS, ESPECIALLY WHERE NOTED, FOR:
 - EXCESSIVE FLASH.
 - BURN.
 - SHORT SHOT.
 - WARPAGE.
 - CRACKS OR TEARS.
- GAUGE NO.s, WHERE APPLICABLE, ARE SHOWN IN PARENTHESES () AFTER THE DIMENSION TEXT.
- WATER TREATMENT: 2 TO 2.5% BY WEIGHT.
- FOR COMPLETE INSPECTION INSTRUCTIONS SEE I. I. WA-484.

CAD FILENAME/LAYERS		G00973BL_P1_HCMP06C12_05	
PANDUIT		CORP. TINLEY PARK, ILLINOIS	
HCMP06C12 HARNESS CLIP MOUNT			
INSPECTION DRAWING			
UNLESS OTHERWISE SPECIFIED, ALL DIMENSIONS ARE GIVEN IN METRIC (mm), THIRD ANGLE PROJECTION			
5	4-10-06	TMSA	REVISED DIMENSIONS C & D FROM 8.001/7.874 AND 10.287/9.779
4	10/28/05	TMSA	REVISED II# FROM WA-115 ADDED SPECIFIC MATERIAL
3	3/12/03	JAD	REVISED FORMAT AND DWG LAYOUT, REV NOTE 3 NOTE 4 WAS NOTE 3, NOTE 3 WAS NOTE 4, CHG TO METRIC UNITS
REV	DATE	BY	CHK
DESCRIPTION		ECN	R CUST SUP OC
DRAWN BY		MAT'L:	
DATE		NYLON 6/6	
CHK'D		SCALE 2X	
		DRAWING NO. 610973BL	
		DWG SIZE A	

5	4-10-06	TMSA		REVISED DIMENSIONS C & D FROM 8.001/7.874 AND 10.287/9.779	G10973BL	4				
4	10/28/05	TMSA		REVISED II# FROM WA-115 ADDED SPECIFIC MATERIAL	G10973BL	4				
3	3/12/03	JAD		REVISED FORMAT AND DWG LAYOUT, REV NOTE 3 NOTE 4 WAS NOTE 3, NOTE 3 WAS NOTE 4, CHG TO METRIC UNITS	G10973BL	3				
REV	DATE	BY	CHK	DESCRIPTION	ECN	R	CUST	SUP	OC	